



NSF EPSCoR

ADVANCING GEOGRAPHIC DIVERSITY IN STEM



NSF EPSCoR Office Hour: September 2023 Session

Briefing for Research Administration Leaders

Presenters

Sandra Richardson, Head, NSF EPSCoR, srichard@nsf.gov

Alicia Knoedler, Head, NSF Office of Integrative Activities, aknoedle@nsf.gov

September 7, 2023

2023-2024 EPSCoR Team

Yolanda Allen
Program Analyst



Pinhas Ben-Tzvi
Program Officer



Jose Colom
Program Officer



Andrea Johnson
Program Officer



Casonya Johnson
Program Officer



Liz Lawrence
Sr. Program Analyst



Hongmei Luo
Program Officer



Ben McCall
Program Officer



Jeanne Small
Program Officer



J.D. Swanson
Program Officer



Tim VanReken
Program Officer
(Out on Fellowship)



Chinonye Whitley
Program Officer



NSF EPSCoR Office Hour Format

- **Today's Audience**

- Leaders within research administration, including Vice Presidents/Vice Provosts/Vice Chancellors for research, their leadership teams, staff within sponsored programs administration, and other individuals who support the development and building of research capacity at any higher education institution in an [EPSCoR jurisdiction](#)

- **30-minute presentation at today's NSF EPSCoR Office Hour**

- Next steps for NSF EPSCoR and EPSCoR jurisdiction in NSF funding
- Role(s) of research administrator leaders in EPSCoR jurisdictions
- NSF data trends for EPSCoR jurisdictions

- **30-minute Q&A + Additional Conversation at today's NSF EPSCoR Office Hour**

- Use Q&A option in zoom (PREFERRED OPTION)
- Email Office Hour questions to epscor-office-hours@nsf.gov

- Next (virtual) EPSCoR Office Hour: October 4, 2023 from 4 – 5 pm ET

- Register for EPSCoR announcements, including the link to the next virtual office hour, at <https://public.govdelivery.com/accounts/USNSF/signup/21286>



Creating Opportunity Everywhere



Research

Investing in research to **increase the knowledge base** surrounding broadening participation.



Education

Using Interventions and capacity building to enhance access and opportunity to STEM education.



Research Infrastructure

Developing the tools and infrastructure needed to **broaden the research community**.



Outreach/Inreach/Partnerships

Working with **external stakeholders**, the **research community**, and **NSF staff**.

Key NSF EPSCoR Highlights from CHIPS & Science Act

(SEC. 10325: EXPANDING GEOGRAPHIC AND INSTITUTIONAL DIVERSITY IN RESEARCH)

Prioritize funding and activities that enable sustainable growth in the competitiveness of EPSCoR jurisdictions, including—

- (i) infrastructure investments to build research capacity in EPSCoR jurisdictions;
- (ii) scholarships, fellowships, and traineeships within new and existing programs, to promote the development of sustainable research and academic personnel;
- (iii) partnerships between eligible organizations in EPSCoR and non-EPSCoR jurisdictions, to develop administrative, grant management, and proposal writing capabilities in EPSCoR jurisdictions;
- (iv) capacity building activities for ERIs, HBCUs, TCUs, and MSIs; and
- (v) building sustainable innovation ecosystems in EPSCoR jurisdictions



Key NSF EPSCoR Highlights from CHIPS & Science Act

(SEC. 10325: EXPANDING GEOGRAPHIC AND INSTITUTIONAL DIVERSITY IN RESEARCH)

- Authorization of a gradual increase in funding for institutions in EPSCoR jurisdictions.

FY23	FY24	FY25	FY26	FY27	FY28	FY29
15.5%	16%	16.5%	17%	18%	19%	20%

- Authorization of a gradual increase in funding of scholarships, graduate fellowships and traineeships, and postdoctoral awards to support EPSCoR institutions.

FY23	FY24	FY25	FY26	FY27	FY28	FY29
16%	18%	20%	20%	20%	20%	20%



Key NSF EPSCoR Highlights from CHIPS & Science Act (Pub. Law 117-167)

(SEC. 10325: EXPANDING GEOGRAPHIC AND INSTITUTIONAL DIVERSITY IN RESEARCH)

- NSF EPSCoR eligibility frozen through 2027
- 28 eligible jurisdictions
- No new entries or graduations during frozen eligibility
- NSF will continue to monitor jurisdictional progress in increasing competitiveness for NSF funding in EPSCoR jurisdictions



Major Themes from Future of EPSCoR Report (2022)

Report includes 8 recommendations (+19 suggestions) with following themes:

Expansion and Support of Human Capital

Strengthen Resources and Infrastructure

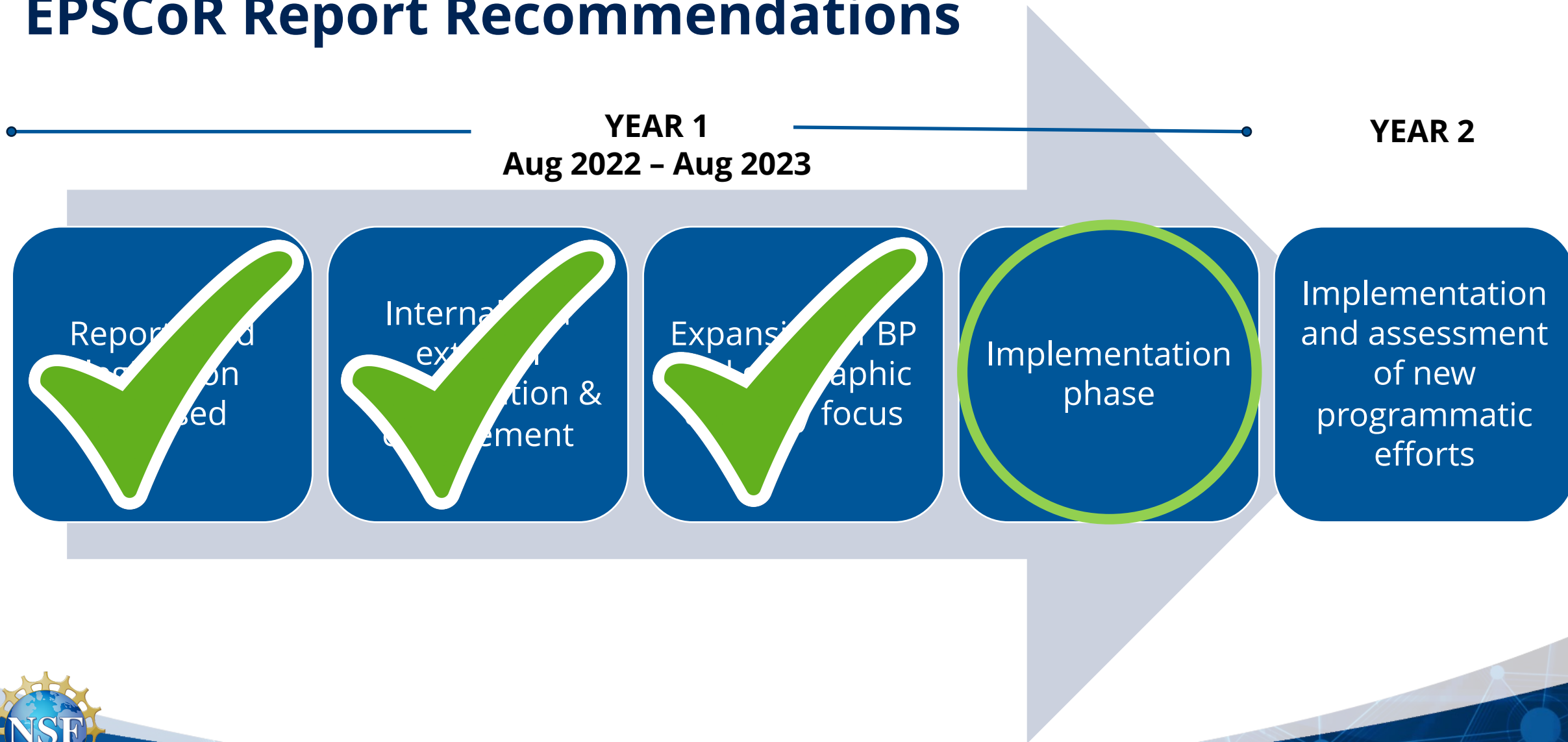
Bridge Building via Partnerships

Enhancement of Inclusion and Diversity

Increase in #, \$, and length of Track-1 awards in single jurisdiction



Timeline of NSF Response to Future of EPSCoR Report Recommendations



May 2023 Release of Two New Programs

EPSCoR Collaborations for Optimizing
Research Ecosystems Research
Infrastructure Improvement Program (E-
CORE RII)

View guidelines
[23-587](#)

E-CORE supports jurisdictions in building capacity in one or more targeted research infrastructure cores that underlie the jurisdiction's research ecosystem.

EPSCoR Research Incubators for STEM
Excellence Research Infrastructure
Improvement (E-RISE RII)

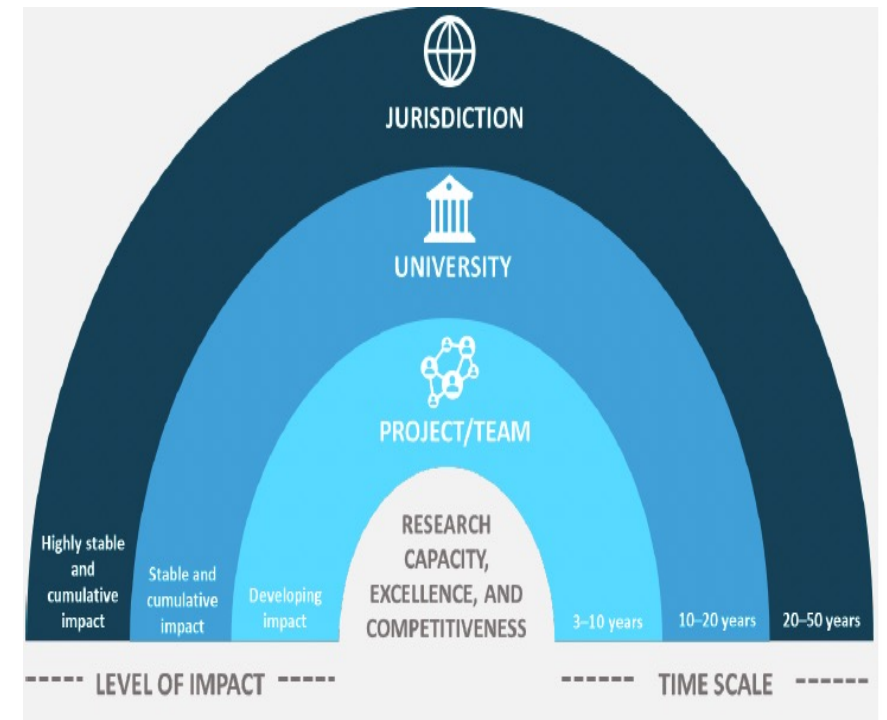
View guidelines
[23-588](#)

E-RISE builds a jurisdiction-wide network of teams of researchers that incubate research in a STEM topical area aligned with priority areas for jurisdiction.



Critical Points to Contextualize Analysis of NSF Data on EPSCoR Funding Patterns

1. There is great variability across jurisdictions.
2. EPSCoR is interested in impacts to the research ecosystem.
3. EPSCoR is a small financial contributor to jurisdictional excellence and competitiveness.



Role(s) of Research Administrator Leaders in EPSCoR Jurisdictions

- Know the data and useful NSF tools for understanding the data
- Know the non-academic community in your EPSCoR jurisdiction
- Promote submission to EPSCoR programs and other NSF funding opportunities



NSF By the Numbers

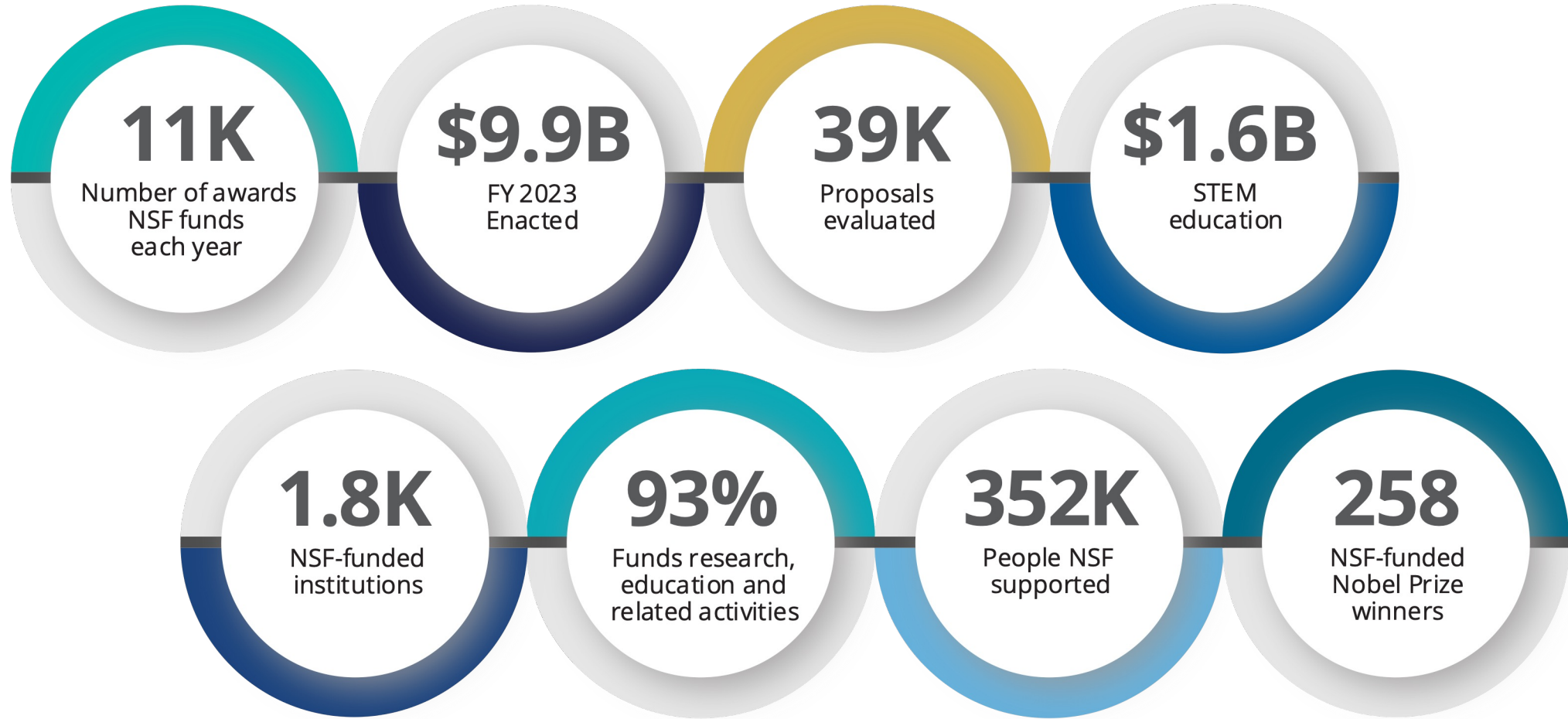
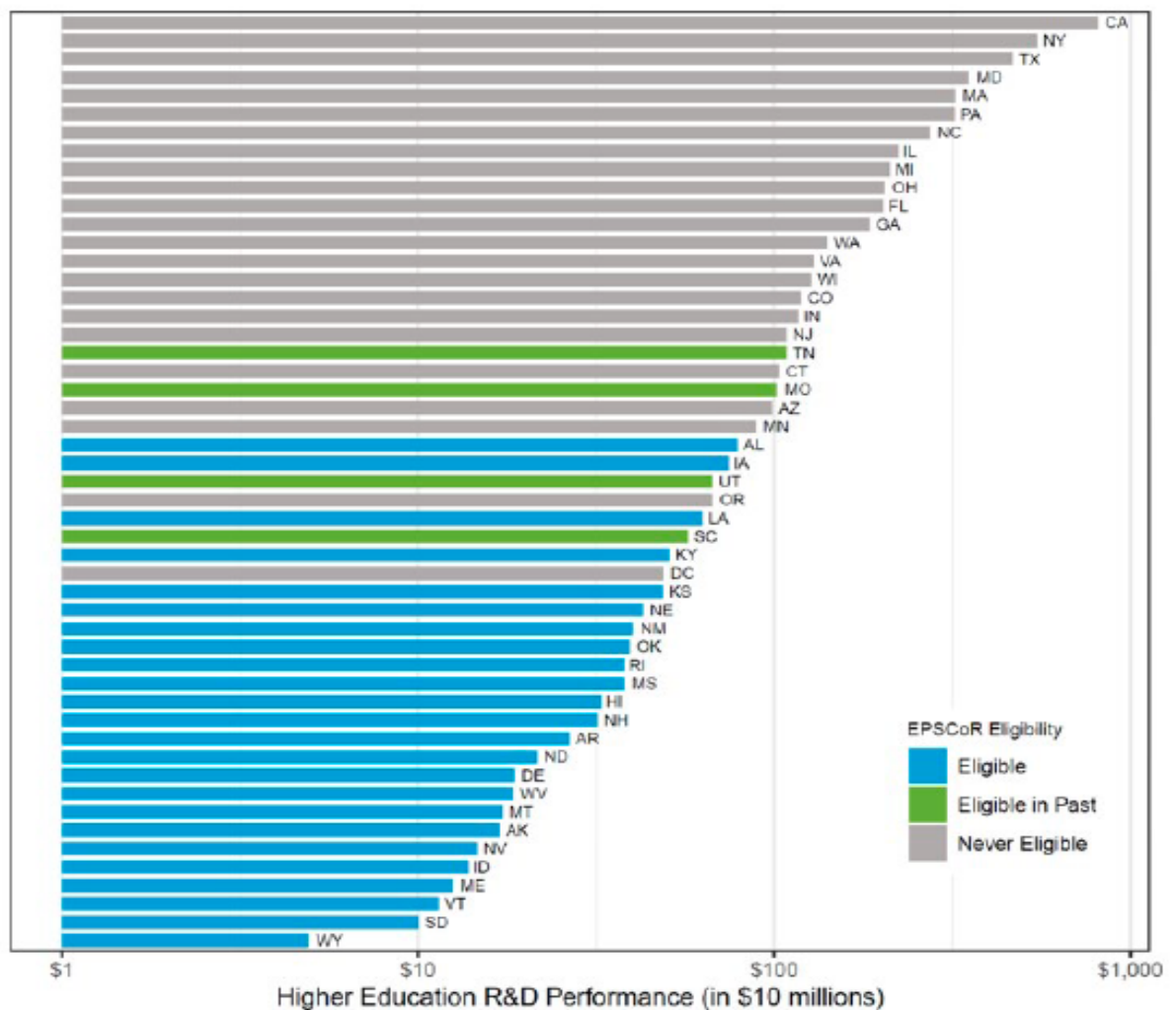
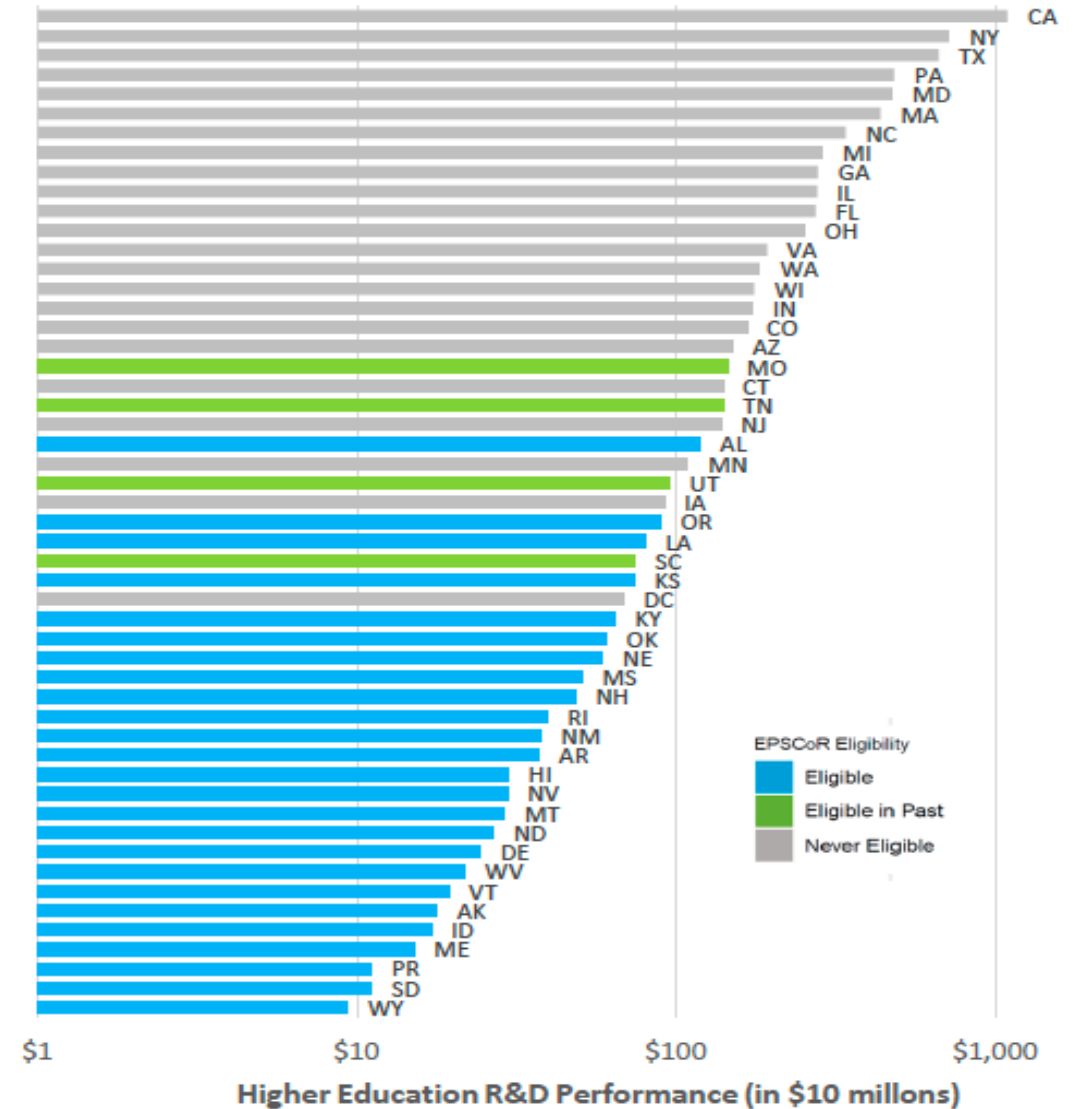


EXHIBIT B.17 HIGHER EDUCATION R&D PERFORMANCE IN 2014



Note: In log scale.

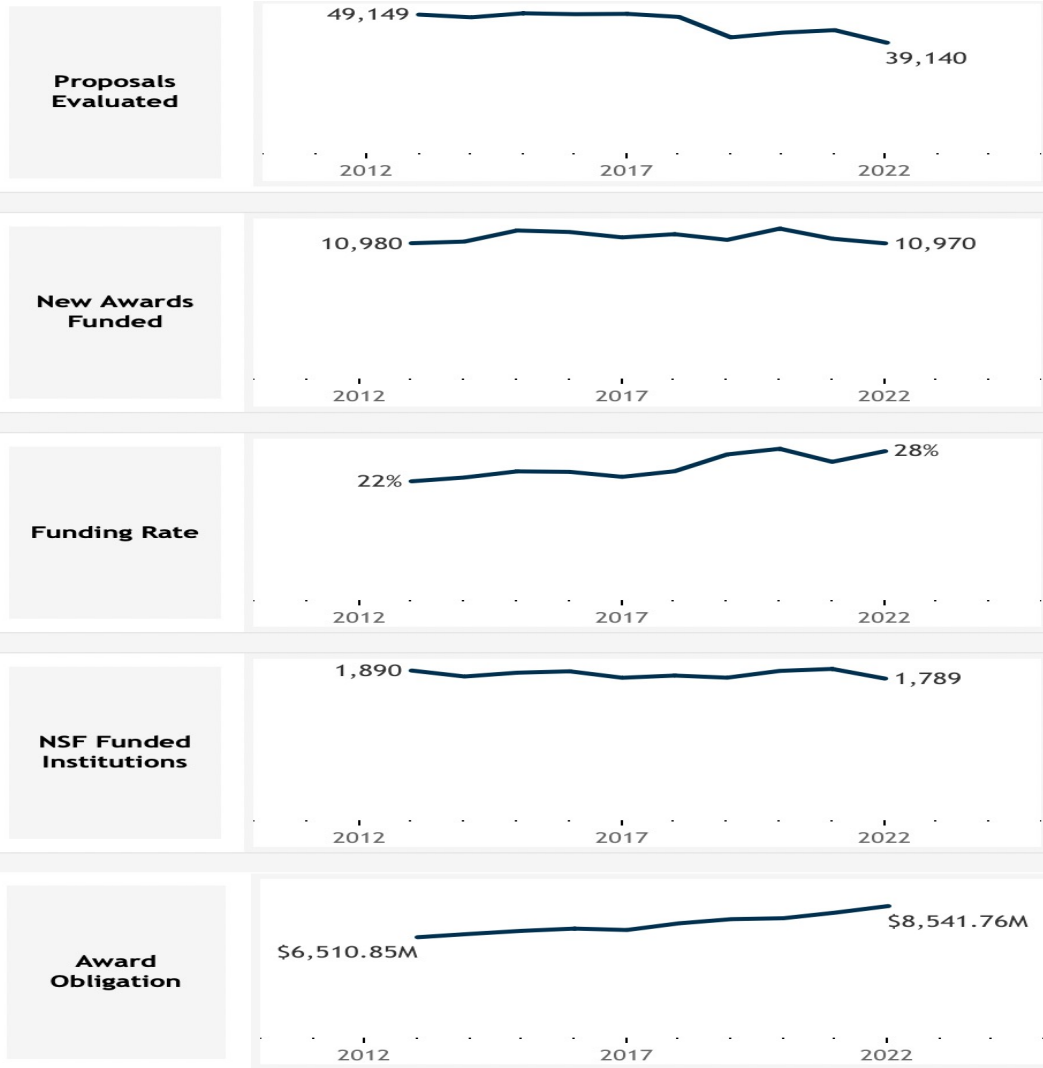
EXHIBIT B.17 HIGHER EDUCATION R&D PERFORMANCE IN 2020



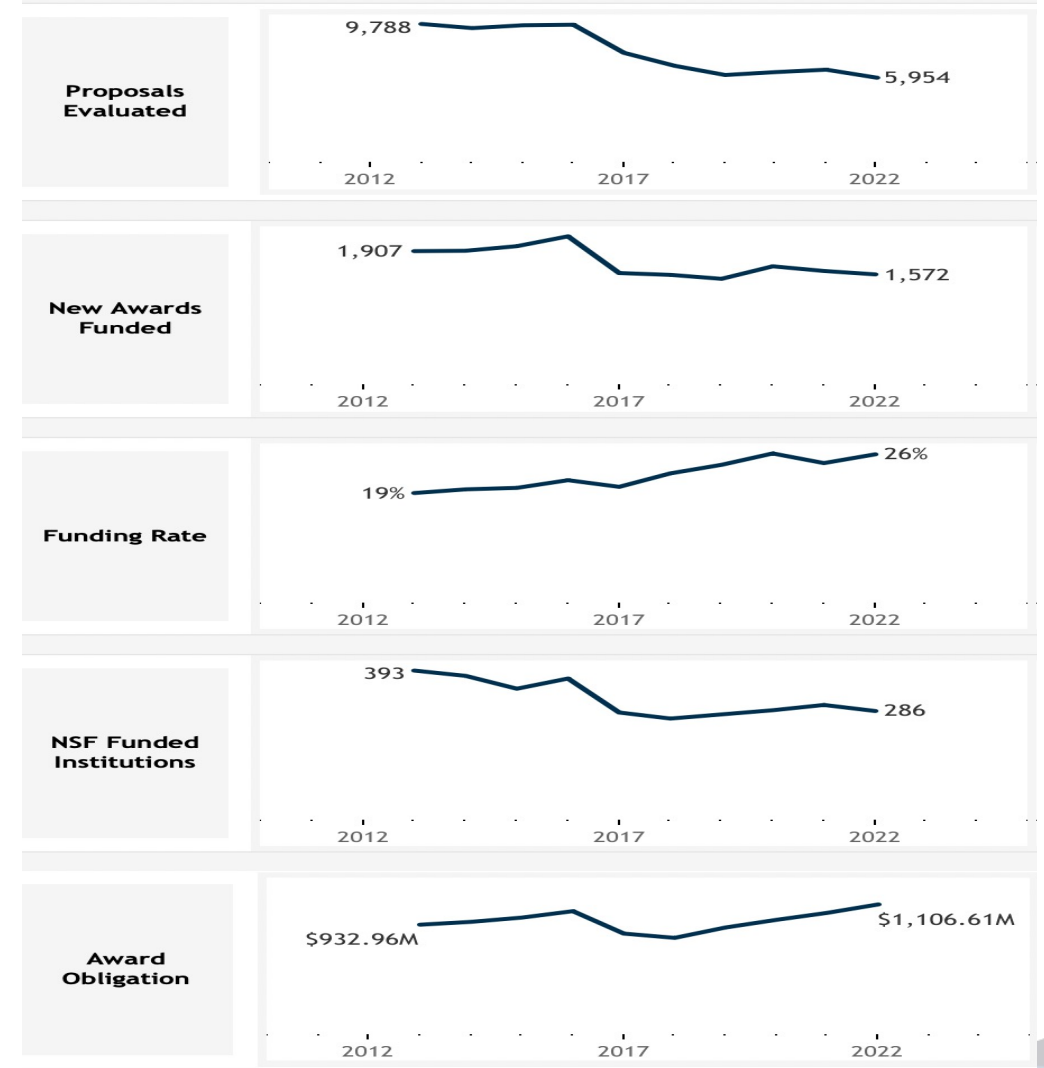
Note: In log Scale. Data are not available for Guam and the U.S. Virgin Islands.

Source(s): National Center for Science and Engineering Statistics, National Patterns of R&D Resources (annual series). State GDP data are from the U.S. Bureau of Economic Analysis, <https://www.bea.gov/data/gdp/gdp-state>

NSF Totals



All Jurisdictions



NSF by the Numbers (<https://tableau.external.nsf.gov>)

Non-EPSCoR States

EPSCoR Jurisdictions

-20%	Change in Proposals Evaluated (2018-2022)	-13%
85%	Percentage of Total Proposals Evaluated (2022)	15%
-8%	Change in New Awards (2018-2022)	1%
86%	Percentage of Total New Awards (2022)	14%
29%	Change in Total Obligations (2013-2022)	47%
87%	Percentage of Total Obligations (2022)	13%

FY23	FY24	FY25	FY26	FY27	FY28	FY29
15.5%	16%	16.5%	17%	18%	19%	20%



NSF by the Numbers (<https://tableau.external.nsf.gov>)

EPSCoR and MSIs (FY22 Data)

- ~30% of the Nation's MSIs are in EPSCoR jurisdictions
- MSIs submitted ~15.5% of the proposals evaluated by NSF
 - ~10% of those submissions came from MSIs in EPSCoR jurisdictions
 - ~12% of the awards to MSIs were awarded to MSIs in EPSCoR jurisdictions
- Funding rate for MSIs in EPSCoR jurisdictions is 31% (compared to 28% for MSIs in general and 26% for all institutions in EPSCoR jurisdictions)
- MSI Investigators in EPSCoR jurisdictions submitted 30% fewer proposals than in 2012 (compared to 14% for NSF overall for MSI Investigators)



Useful NSF Resources

- NSF Webpage: [NSF.gov](https://www.nsf.gov)
- NSF Broadening Participation in STEM: www.nsf.gov/broadeningparticipation/
- NSF Funding Opportunities: beta.nsf.gov/funding/opportunities
- NSF Toolkit: www.nsf.gov/about/congress/toolkit.jsp
- Customizable NSF Alerts: service.govdelivery.com/accounts/USNSF/subscriber/new
- ProSPCT: Program Suitability & Proposal Concept Tool: suitability.nsf.gov
- NSF Staff Directory: www.nsf.gov/staff/
- NSF Advisory Committees: www.nsf.gov/about/performance/dir_advisory.jsp



Proposal Submission Considerations

- PAPPG Proposal Submission Mechanisms (other than in response to traditional solicitations)
- Workshop and Conference Submissions (for EPSCoR and other NSF programs)
- Funding Opportunities at Other Federal Agencies



Additional Conversation and Questions



NSF EPSCoR
ADVANCING GEOGRAPHIC DIVERSITY IN STEM

