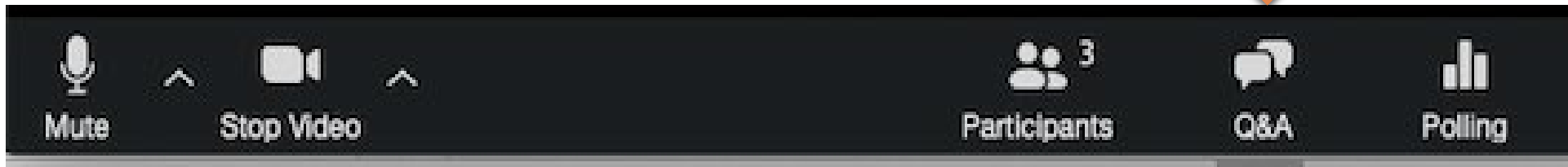


Welcome! 2020 CAREER Webinar Questions?

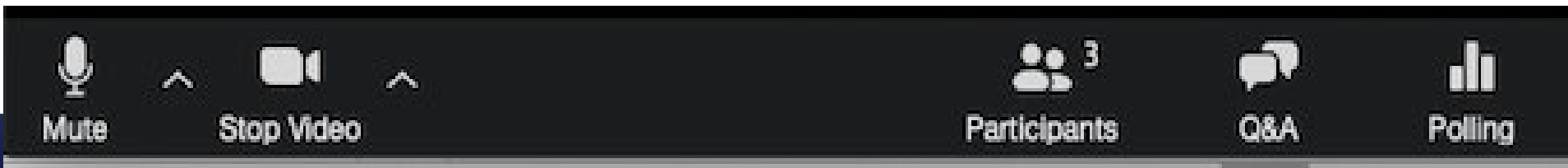
Cassandra Cox, ccox@associates.nsf.gov

Carole Read, cread@nsf.gov



Webinar Administrative Logistics

- Attendees will be in listen-only mode during the webinar.
- View real-time captions during the webinar at URL:
<https://www.captionedtext.com/client/event.aspx?EventID=4415585&CustomerID=321>
- Webinar recording and slides will be available on CAREER Homepage
https://www.nsf.gov/funding/pgm_summ.jsp?pims_id=503214.
- For specific questions about your project, contact your Program Director.
- Click the Zoom Q&A button to submit questions, comments, and/or concerns for reply during the webinar.





2020 NSF CAREER Program Briefing



NSF CAREER Coordinating
Committee
May 13, 2020

Support for New Investigators

- The Faculty Early-Career Development (CAREER) program is one of many NSF funding opportunities for new investigators
- All disciplinary research programs at NSF support new investigators as part of regular (“core”) research competitions
- More than 33% of research proposals submitted to NSF are from new (not previously NSF-funded) investigators
- Approximately 20% of the research proposals from new investigators are submitted to the CAREER Program



Faculty Early Career Development (CAREER) Program (NSF 20-525): Goals

- “A Foundation-wide activity that offers the National Science Foundation’s most prestigious awards in support of early-career faculty who have the potential to serve as **academic role models in research and education and to lead advances in the mission of their department or organization.**”
- “Activities pursued by early-career faculty should build a firm foundation for a **lifetime of leadership in integrating education and research.**”



CAREER Program: Goals

- Emphasizes the importance NSF places on early development of academic careers in which the excitement of research is enhanced by inspired teaching and dissemination of new knowledge
- Aims to provide stable support at a sufficient level and duration to enable awardees to develop careers not only as outstanding researchers but also as effective, committed educators
- Aims to encourage faculty and academic institutions to value and support the integration of research and education, in which the process of discovery stimulates learning and assures that research findings are quickly and effectively communicated in a broader context and to a large audience



Faculty Early Career Development (CAREER) Program (NSF 20-525)

- **Next Deadline:** July 27, 2020, Independent of NSF Division or Program
- **Future Years:**
 - Fourth Monday in July, Annually Thereafter
- **FAQs Document:** www.nsf.gov/career



NSF 20-525 Revision Notes

- PI needs to meet eligibility criteria as of the annual deadline
 - Clarification regarding minimum percentage appointment for eligibility to the program (50%)
 - Only one annual deadline applies to all CAREER submissions
-
- Eligibility requirements have been revised to clarify the required early-career status of applicants.
 - Support for senior personnel other than the PI that is commensurate with a limited collaborative role in the project is now allowed in the budget of the proposal or of a sub recipient (sub award).



Investigator Eligibility Criteria

- Hold a doctoral degree by proposal deadline
- Be untenured and employed in an at least 50% tenure-track (or tenure-track-equivalent) assistant professor (or equivalent title) position at an eligible institution as of the annual deadline
- Have both research and educational responsibilities at the eligible institution
- Have not previously received a CAREER award
- Have not had more than two CAREER proposals reviewed previously



Institutional Eligibility

- Institutions of Higher Education (IHEs) in the U.S. that award degrees in fields supported by NSF
- Non-profit, non-degree-granting organizations in the U.S. such as museums, observatories, or research labs (Note that eligibility requirements of the PI's position must be satisfied)
- NSF encourages proposals from all institutional types, including Minority Serving and Primarily Undergraduate Institutions



CAREER or Regular proposal?

- CAREER proposals are ***single-PI*** projects that include research and education activities that are integrated, innovative, and ambitious
- CAREER proposals require a letter of support from the Department Chair
- The CAREER program's aims are lofty – CAREER awards are a lot of work
- Are you at the right stage in your career to undertake the commitments of a CAREER award?
- Have you discussed your ideas with mentors / peers / program officers?
- Have you demonstrated commitment to both research and education?



CAREER varies across NSF

- CAREER proposals are submitted to, and reviewed by, one or more of the disciplinary research programs
- Typical award sizes vary according to Directorate/Division/Program
- Expectations for scope of research and education activities vary with disciplinary community norms
- Contact relevant Program Directors to discuss your ideas and seek more information. If need help to identify a suitable program, contact Division Contact(s) - <http://www.nsf.gov/crssprgm/career/contacts.jsp>
- For interdisciplinary proposals, contact all relevant Program Directors or Division Contacts



Merit Review of CAREER varies across NSF

- Ad hoc & Panel (review with other proposals under consideration by the disciplinary program):
 - most of GEO (AGS uses ad hoc only)
 - BIO and SBE
- Primarily dedicated CAREER Panels :
 - ENG, CISE, EHR
- MPS varies by Division:
 - AST : Panel only
 - CHE, DMR – Mix of ad hoc & panels
 - DMS – Mostly panel
 - PHY – Mostly ad hoc



CAREER Proposal Ingredients

- An integrated plan for research and education, ambitious but feasible
- Compelling argument that project will achieve effective integration of or synergy between research and education activities
- Departmental Letter demonstrating commitment to the career development of the investigator
- Letters of Collaboration (not of support or endorsement) when appropriate
- A budget that is consistent with the scope of the research and education activities



Integration of Research and Education

- Think creatively about the reciprocal relationship between research and education activities and how they may inform each other in your career development
- Plans should reflect your own disciplinary and educational interests and goals, as well as the needs and context of your organization
- There are different expectations within different disciplinary fields – a wide range of research and education activities may be appropriate for the CAREER program
- Some investigators may wish to pursue an additional activity such as entrepreneurship, industry partnerships, or policy that enhances their research and education plans
- See the CAREER program solicitation for thought-provoking examples
- Communicate with the CAREER contact(s) in the Division(s) closest to your area of research to discuss expectations



Departmental Letter (2 pages)

- Statement indicating the PI's eligibility for the CAREER program
- Description of how the PI's career goals and responsibilities mesh with that of the organization and department
- Commitment to the PI's proposed CAREER research and education activities
- Description of how the department will contribute to the professional development of the PI with mentoring and whatever is needed to further the PI's efforts to integrate research and education



Letter(s) of Collaboration

- Letter should consist of a single-sentence statement of collaboration:
 - “If the proposal submitted by Dr. [name of the PI] entitled [proposal title] is selected for funding by the NSF, it is my intent to collaborate and/or commit resources as detailed in the Project Description.”
 - Must NOT recommend or endorse PI or project
- Project Description or Facilities, Equipment, and Other Resources must document the nature of all project collaborations, such as:
 - Intellectual contributions to the project
 - Permission to access a site, use instrumentation or facility
 - Offer to furnish samples / materials for research
 - Logistical support / evaluation services
 - Mentoring of U.S. students at a foreign site, if applicable



CAREER Personnel and Budgets

- Co-PIs on cover sheet are not allowed
- Request for support of other senior personnel, consultants, or sub-awards is allowed, commensurate with a limited role in the project
- International activities are encouraged and may be supported by the Office of International Science and Engineering (OISE)
- Programs may support buy-out of academic year time for teaching-intensive institutions (check with your Program Officer)
- Programs may or may not prefer to make awards with budget close to the anticipated minimum size (check with your Program Officer)



Suggested Proposal Submission Timeline

- It is important to communicate with your sponsored research office (SRO) on their timeline for submitting your proposal to plan your timeline
- In the solicitation 20-525 refer to Section V. PROPOSAL PREPARATION AND SUBMISSION INSTRUCTIONS and review the suggested proposal submission timeline document
- The document gives guidance on common questions on submitting via Fastlane, Research.gov, and Grants.gov

https://www.research.gov/common/attachment/Common/Career_deadline.pdf



Suggested Proposal Submission Timeline

10 days	Friday, July 17, 2020	Submit CAREER proposal through Grants.gov	Proposals submitted via Grants.gov have to go through additional processing before they are accepted at NSF. For this reason, if submitting via Grants.gov, we recommend allowing extra time to resolve any system errors and avoid high volume delays at the NSF Help Desk if problems arise.
7 days	Monday, July 20, 2020	Submit CAREER proposal through FastLane or Research.gov	Aim to submit by this date to allow time to resolve any system errors in advance of the deadline and avoid high volume delays at the NSF Help Desk. Print the file to a PDF and view it online to make sure the correct version was submitted. Corrections are automatically accepted before the deadline.
0 days	Monday, July 27, 2020	Proposal submission deadline	Proposals are due by 5 p.m. submitter's local time. Proposals that arrive after the deadline will be returned without review.

https://www.research.gov/common/attachment/Common/Career_deadline.pdf



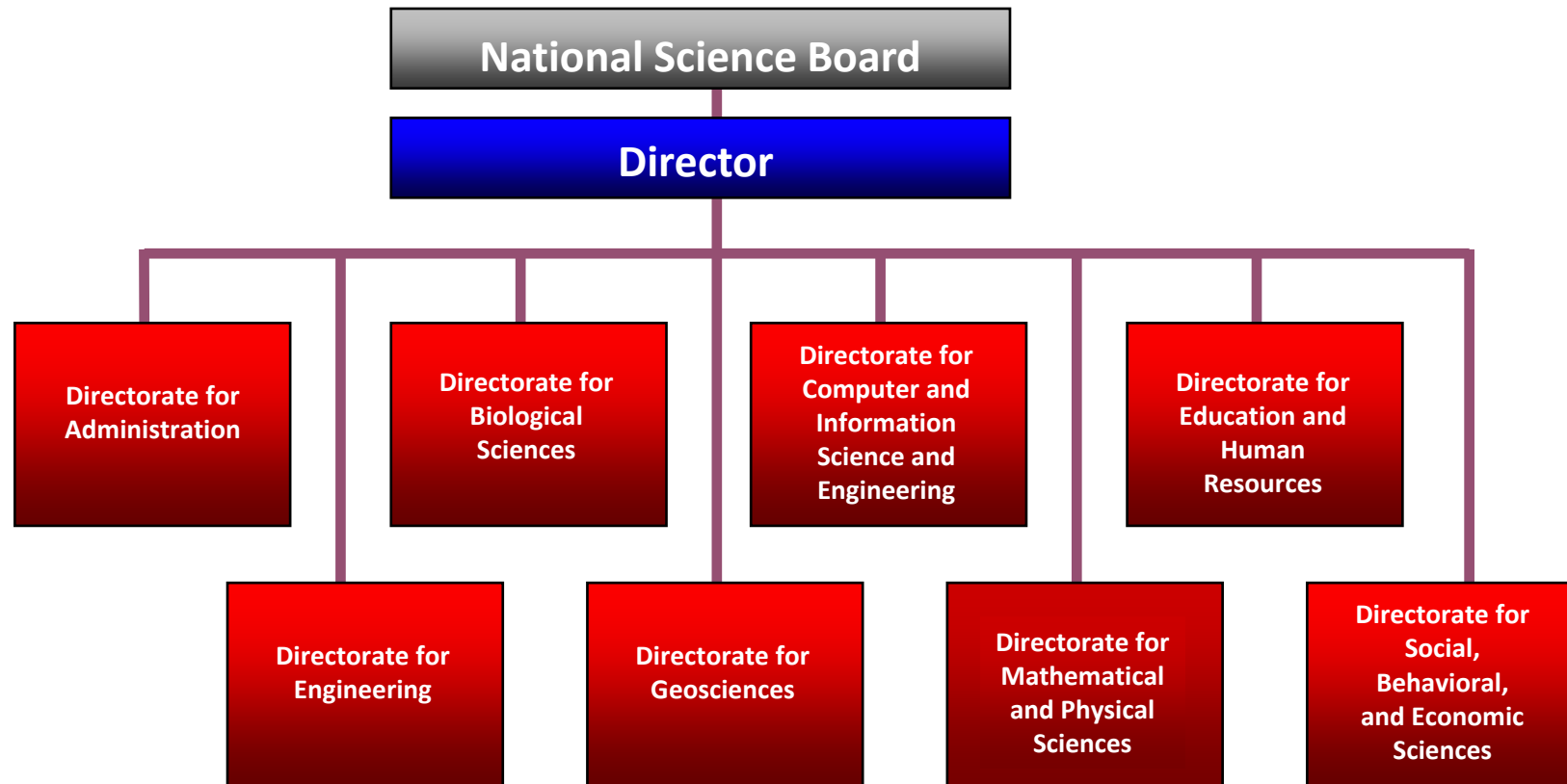
Finding a research home

- Are you proposing scientific research?
- No?
 - Look for support from other sources
- Yes?
 - Your research objective determines the NSF program fit, not the application of your research results.
- Be prepared to answer the question: “What is your research objective?” in 25 words or less to help form your topic area
- Check out the CAREER program contacts page:

<https://www.nsf.gov/crssprgm/career/contacts.jsp>



NSF is Organized Around Research Topics



The Next Step: You submit to a program

- Look at NSF's web site: www.nsf.gov and www.nsf.gov/funding
 - Check out research programs
 - Read what research topics they support
 - Abstracts for recent awards
 - Workshop reports
- Not sure who to contact with idea? Check out the division and directorate CAREER Contacts:
<https://www.nsf.gov/crssprgm/career/contacts.jsp>



Award Search Capabilities

<http://www.nsf.gov/awardsearch>

NSF Award Search: Advanced Search - Internet Explorer

https://www.nsf.gov/aw... Nation... NSF Award Search: Advan... x

File Edit View Favorites Tools Help

Play Daily Crossword - Th... Log In - NSF Wiki Home - Executive Develo... IPA Performance Manage... Microsoft Forefront TMG Employee Express - Home... Suggested Sites

Awards Advanced Search

[Overview of Award Search Features](#)

Awardee Information

Principal Investigator First Name

Principal Investigator Last Name

☐ Include Co-Principal Investigator in name search

Organization

State

Zip Code

Country

Program Information

NSF Organization

Element Code

☐ Any ☒ All

Reference Code

☐ Any ☒ All

HINT: The "Program" box searches both program element and program reference names and codes.

Program

Program Officer

Additional Information

Keyword

HINT: The Keyword field searches on the title and abstract only.

☐ Search Award Title Only

Award Number

From To

Award Amount

Award Instrument

HINT: Data prior to 1976 may be less complete.

☒ Active Awards ☐ Expired Awards

Original Award Date From To

Start Date From To

End Date From To

Search Reset



We encourage you to contact Program Directors

- Email the appropriate program officer(s) and ask if your research project fits their program
 - One-page summary (preferred)
- Your program director can:
 - Confirm program fit
 - Give advice on common proposal preparation errors
 - Help you understand the review of a previous proposal
 - Point you to resources you can use to help write a better proposal next time
 - Give general guidance on good proposal writing



Questions You Shouldn't Ask a Program Director

- Will you fund my research?
- Is NSF interested in my topic?
- What hypothesis should I use?
- What research topic do you think I should work on?
- What is your program's funding rate?
- If I send a copy of my proposal to you, will you help me edit it?
- This is my last chance, what can I do?



Take home: Proposal Basics

- Your proposal will be evaluated by the reviewers
- Reviewers need to know just a few things:
 - What is it about (the research objective)?
 - How will you do it (the technical approach)?
 - Can you do it (you and your facilities)?
 - Is it worth doing (intellectual merit and broader impacts)?
 - Will the effort provide a firm foundation for your career plans (integration of education and research)?
- This is, basically, all the proposal needs to convey – but it needs to convey this



Volunteer to Be a Reviewer

- Proposal review is an important service to your community
- There's no better way to see how the system works
- There's no better way to understand what makes a proposal compelling





QUESTIONS ?

