



NSF EPSCoR
ADVANCING GEOGRAPHIC DIVERSITY IN STEM



EPSCoR Live!

**EPSCoR Research Infrastructure
Improvement Program: EPSCoR Research
Incubators for STEM Excellence (E-RISE)
NSF 25-522**

Casonya Johnson, Ph.D.
NSF EPSCoR Program Director
casjohns@nsf.gov

 **March 31, 2026**

EPSCoR's mission is to enhance research competitiveness of targeted jurisdictions by strengthening STEM capacity and capability through 5 goals:

1. Catalyze research capability
2. Establish STEM professional development pathways
3. Broaden participation of groups and institutions in STEM
4. Effect engagement in STEM at national and global levels
5. Impact jurisdictional economic development

In short, EPSCoR seeks to support the development of robust research ecosystems.



Active EPSCoR Funding Opportunities

- **E-CORE:** (NSF 25-523): up to \$10M over 4 years, opportunity for renewal
 - Builds capacity in targeted research infrastructure cores within a jurisdiction's research ecosystem
- **E-RISE:** (NSF 25-522): up to \$8M over 4 years, opportunity for renewal
 - Develops sustainable collaborations across a jurisdiction to address jurisdictional research priorities
- **Focused EPSCoR Collaborations:** (NSF 24-573, DCL: NSF 24-091) up to \$1.5M per year for up to 4 years
 - Interjurisdictional research collaborations addressing NSF priority areas
- **EPSCoR Research Fellows:** (NSF 24-528) up to \$300k over 2 years
 - Provides research fellowships for Assistant, Associate Professors, or Research Faculty to partner with research institutions and government agencies
- **EPSCoR Graduate Fellowship Program:** (NSF 24-588, \$477k) over 3 years
 - Provides institutional awards to support three to five distinguished graduate Fellows



E-RISE supports the development of sustainable research infrastructure and capacity in EPSCoR jurisdictions through collaborative, hypothesis-driven, or problem-driven research and workforce development to improve competitiveness in selected STEM fields, including social science.

E-RISE Goals:

1. Build a jurisdiction-wide network of teams of researchers and sectors that conduct and develop high-quality research in a defined STEM disciplinary area or topic of choice that is aligned with jurisdictional priority areas and EPSCoR's mission and goals.
2. Develop high quality hypothesis or problem-driven research projects, including projects that explore emerging or interdisciplinary research areas with high potential impact, and that will sustain project outcomes beyond the E-RISE funding.
3. Develop effective STEM education and workforce development opportunities within the research topic(s) that engage a breadth of audiences across the jurisdiction and establish meaningful partnerships at the individual and institutional levels both within the jurisdiction and beyond.



Key Considerations from the New Program Solicitation

Eligibility:

- RII Track-1 PIs/co-PIs may participate as senior personnel
- Institutions funded by RII Track-1 awards may participate as sub-awardees
- Individuals may serve as PI or co-PI on only one RII Track-1 award, E-RISE submission, or E-RISE award at any given time.

Budget

- Collaborative projects – total \$8M over 4 years
- Optional renewal project award maximum budget of \$4.5M total + 20% in cost-share for an additional 3 years

Personnel

- Leadership Team that includes Project Manager and Networking/Partnerships Manager
- Independent facilitator for required strategic planning meeting

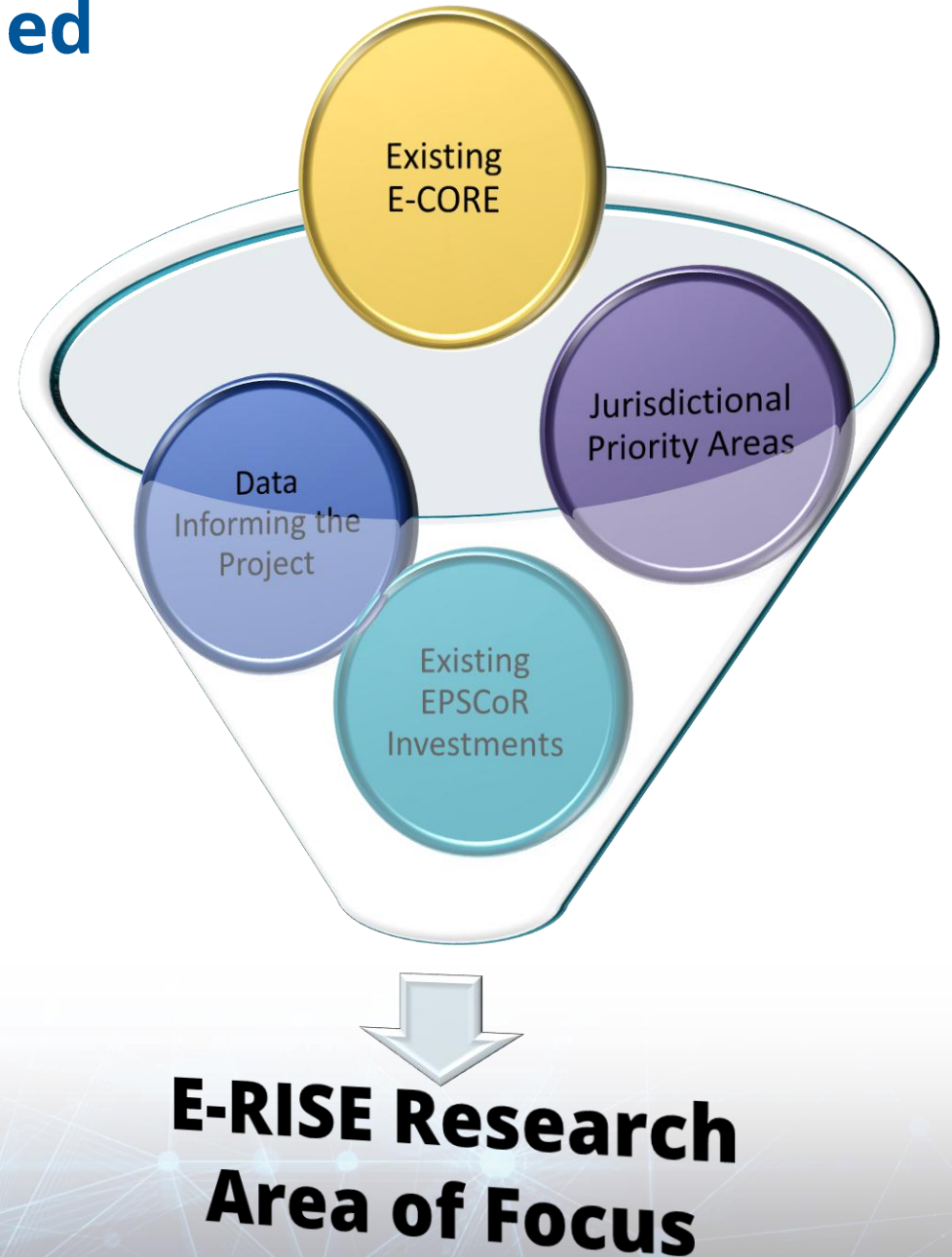
Other:

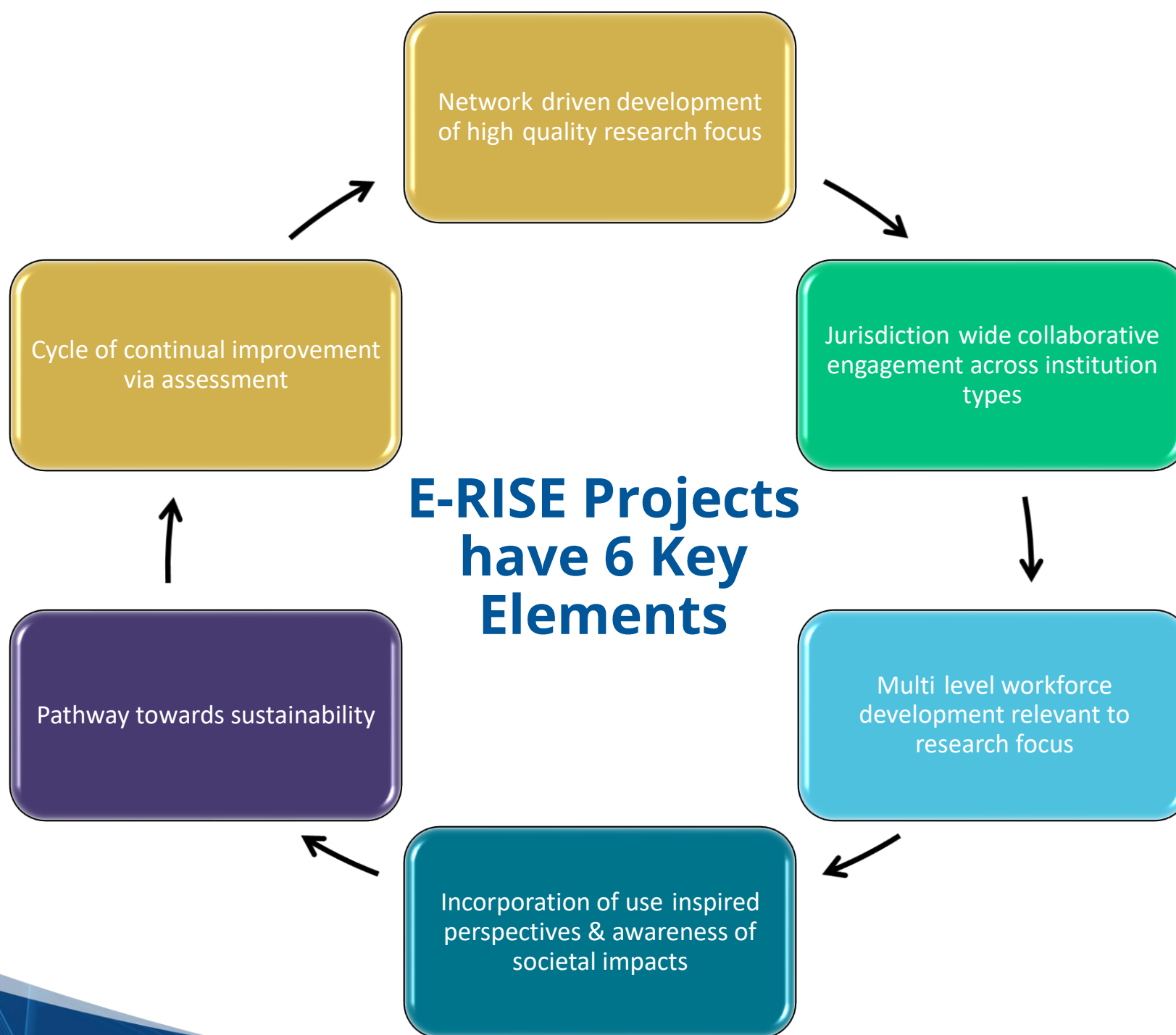
- Submissions must include a copy of the notice of intent to submit that was sent to the Jurisdictional Steering Committee.

Deadline: August 11, 2026, by 5 PM submitting institution's local time.



Successful E-RISE projects are grounded in an assessment of the jurisdiction's research ecosystem.





Project Descriptions should be organized into four sections

- **Research and Capacity-Building Goals and Vision**
 - Overview, Vision
 - Research
 - Workforce Development
 - Jurisdictional Impact and Sustainability
- **Execution Plan, Evaluation and Assessment**
- **Organization and Management**
- **Results from Relevant Prior Support**



E-RISE Projects will be evaluated based on merit review criteria and solicitation-specific review criteria

Merit Review Criteria

- Intellectual Merit
- Broader Impacts

Solicitation-Specific Review Criteria



E-RISE Projects will be evaluated based on merit review criteria and solicitation-specific review criteria (cont'd)

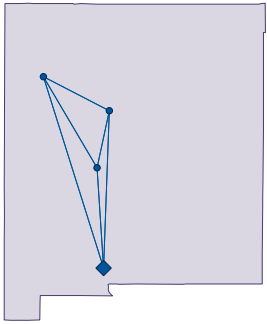
Merit Review Criteria

Solicitation-Specific Review Criteria

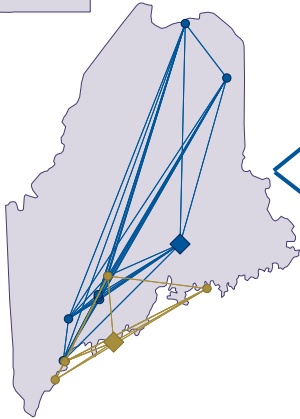
- Connection and potential impact of the project to jurisdictional research capacity building and EPSCoR goals
- Development of a skilled workforce that is relevant to the project and its outcomes
- Support of a culture of collaborative engagement of different institution types and sectors (e.g., academia, industry and government)
- Plan towards sustainability and societal impact
- Plan for project management, leadership, and partnerships



E-RISE projects are multidisciplinary networks that address critical research areas

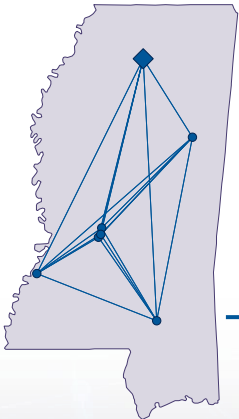


NM: Research Center for Distributed Resilient and Emergent-Intelligence-Based Additive Manufacturing

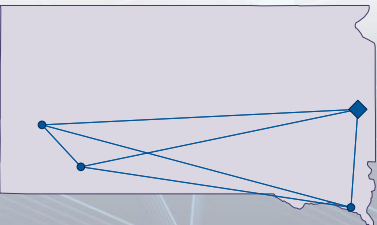


ME (1): Maine Algal Research Infrastructure and Accelerator

ME (2): Enhancing Maine Forest Economy, Sustainability, and Technology Ecosystem To Accelerate Innovation



MS: Establishment of the Mississippi Nano-bio and ImmunoEngineering Consortium



SD: BioNitrogen Economy Research Center

