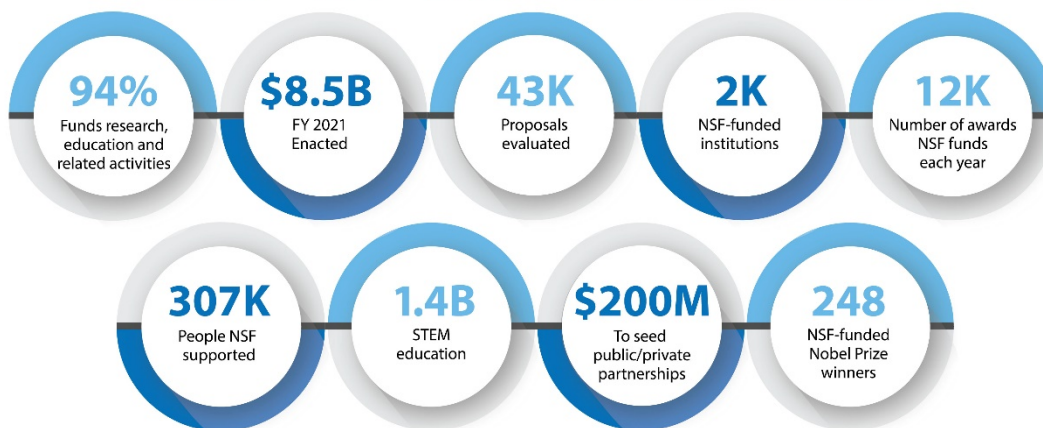


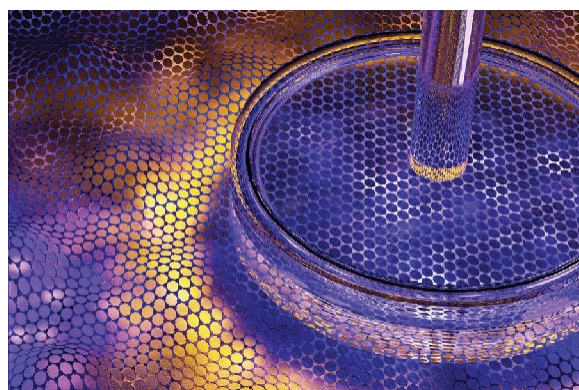


# NSF BY THE NUMBERS



## ADVANCING SCIENCE AND ENGINEERING RESEARCH IN THE U.S. AND ABROAD

- The [U.S. National Science Foundation](#) was created by Congress in [1950](#) to continue the U.S. science and technology enterprise began during World War II.
- NSF allocates **94%** of its approximately [\\$8.5 billion](#) budget for grants and awards to support research projects, facilities and STEM education.
- NSF funds research [in all 50 states and U.S. territories](#).
- NSF fosters international scientific collaboration on [all 7 continents](#) around the globe.
- About [2,000 academic and other private and public institutions](#) across the U.S. conduct NSF-funded research.
- NSF supports [24% of all federally funded academic fundamental research](#) at U.S. colleges and universities.
- In 2020, NSF received approximately [43,000 research proposals](#) from scientists and engineers and funded about 12,000.
- NSF-funded researchers have received [248](#) Nobel Prizes.



**24%** of all federally funded academic fundamental research comes from NSF.

## SUPPORTING WORLD-CLASS RESEARCH FACILITIES AND INFRASTRUCTURE

- NSF supports almost **60 centers** focused on interdisciplinary research in areas such as artificial intelligence, [chemistry](#), [engineering](#), [materials](#), [nanotechnology](#), quantum information sciences, [energy and biology](#).
- NSF has 4 [oceanographic research vessels](#) and provides support to the **18 ships** and **3 submersibles** in the [U.S. Academic Research Fleet](#).
- NSF owns [2 aircraft](#) that provide unique research capabilities to probe the Earth's atmosphere.
- NSF supports [13 ground-based observational facilities](#) in the U.S. and around the world.
- NSF funds [7 of the world's supercomputers](#).
- NSF supports [8 facilities](#) to study and mitigate powerful natural forces including a shake table for **earthquakes**, a large wave basin for **tsunamis**, and wind facilities for **hurricanes and tornados**.
- NSF funds [28 Long-Term Ecological Research sites](#) to achieve an understanding of how components of ecosystems interact.
- NSF's [National Ecological Observatory Network comprises 81 sites across the U.S.](#) and provides open data to researchers to understand how ecosystems are changing.
- NSF manages all U.S. logistics and research for [3 permanent stations in Antarctica](#): McMurdo, Amundsen-Scott South Pole and Palmer.



**13** NSF ground-based observational facilities in the U.S. and around the world.

## EXPANDING THE SCIENCE AND ENGINEERING WORKFORCE

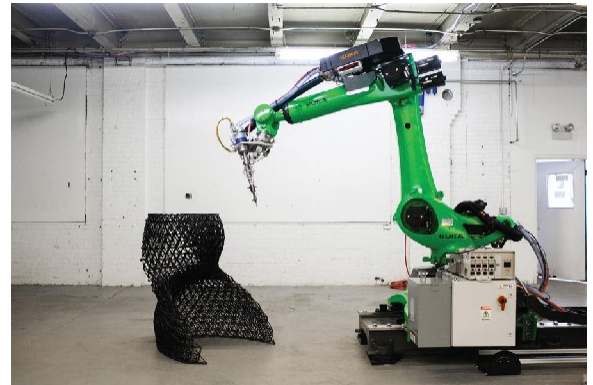
- Annually, NSF funding **directly impacts 307,000 researchers**, technical professionals, post-doctoral students, graduate students, undergraduates, K-12 teachers and students.
- Since **1952**, NSF has supported [more than 61,000 students](#) through its flagship Graduate Research Fellowship Program.
- In Fiscal Year 2020, approximately [42,000 graduate students](#) received funding through NSF programs as part of research and education grants.
- NSF's Advanced Technological Education program supports [26 active centers across the U.S.](#), preparing students for jobs in high-tech industries.
- The [NSF INCLUDES national network](#) broadens participation in STEM by creating access and opportunities for all U.S. residents through public, private and academic partnerships.



**307K** people are directly involved in NSF activities annually.

## ACCELERATING THE EXCHANGE BETWEEN LAB AND MARKET

- NSF created the [Small Business Innovation Research program](#) in 1977, which has expanded across government and spends over **\$3 billion annually** on research and development.
- NSF established the [Small Business Technology Transfer Program](#) in 1992 to encourage the translation of research from lab to marketplace. Through small business and technology transfer programs, the federal government sets aside **\$450 million annually**.
- In FY 2020, NSF awarded more than [\\$200 million](#) in R&D funding through its small business programs.
- Each year, NSF funds about [400 companies](#) across nearly all technology and market sectors and supports about 700 active awards each year.
- NSF established Innovation Corps, or I-Corps™, in 2011, which offers entrepreneurship training to scientists and engineers; the program has resulted in [950 startup companies](#).



**400** companies receive NSF small business funding each year

## DID YOU KNOW?

Since 1992, NSF's [Louis Stokes Alliances for Minority Participation](#) program has helped more than **700,000 students from groups historically underrepresented in STEM** -- African Americans, Hispanic Americans, American Indians, Alaska Natives, Native Hawaiians and Native Pacific Islanders -- attain a bachelor's degree in a science or engineering discipline.