

# Leveraging NSF EPSCoR Investments for Regional Impact

Hollie J. Mackey, Ph.D.  
Chief Strategy Officer  
North Dakota State University  
[hollie.mackey@ndsu.edu](mailto:hollie.mackey@ndsu.edu)





**FARMS**

NSF Engines: North Dakota Advanced Agriculture Technology Engine

POWERING  
IDEAS  
THAT FEED  
**THE WORLD**

RIGHT  
PARTNERS

RIGHT  
TIME

RIGHT  
MODEL

RIGHT  
ENVIRONMENT



# Leveraging NSF EPSCoR Investments

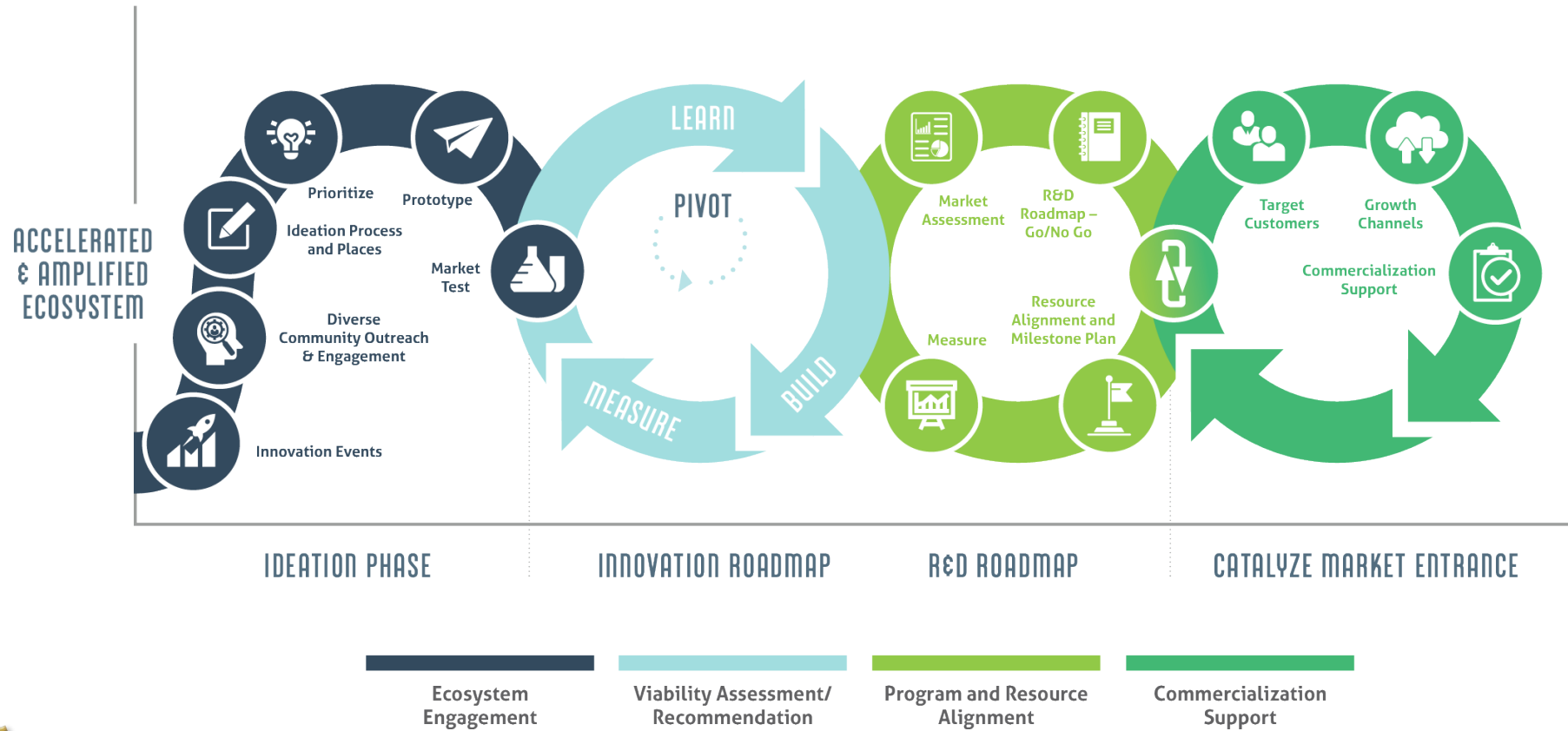
---

North Dakota has leveraged NSF EPSCoR Research Infrastructure Improvement investments, partnerships, and project outcomes to increase impact in the research ecosystem throughout the state and beyond, including leveraging NSF EPSCoR investments for success in launching a regional Type II Engine

**Leveraging more than intellectual merit (What? So What? Now What?)**



# Leveraging for Impact







**FARMS**

*NSF Engines: North Dakota Advanced Agriculture Technology Engine*

**RIGHT  
TIME**

**RIGHT  
PARTNERS**

**RIGHT  
ENVIRONMENT**

**RIGHT  
MODEL**



**Learn More:  
[www.FARMSfeedsttheworld.com](http://www.FARMSfeedsttheworld.com)**

**Questions?**

